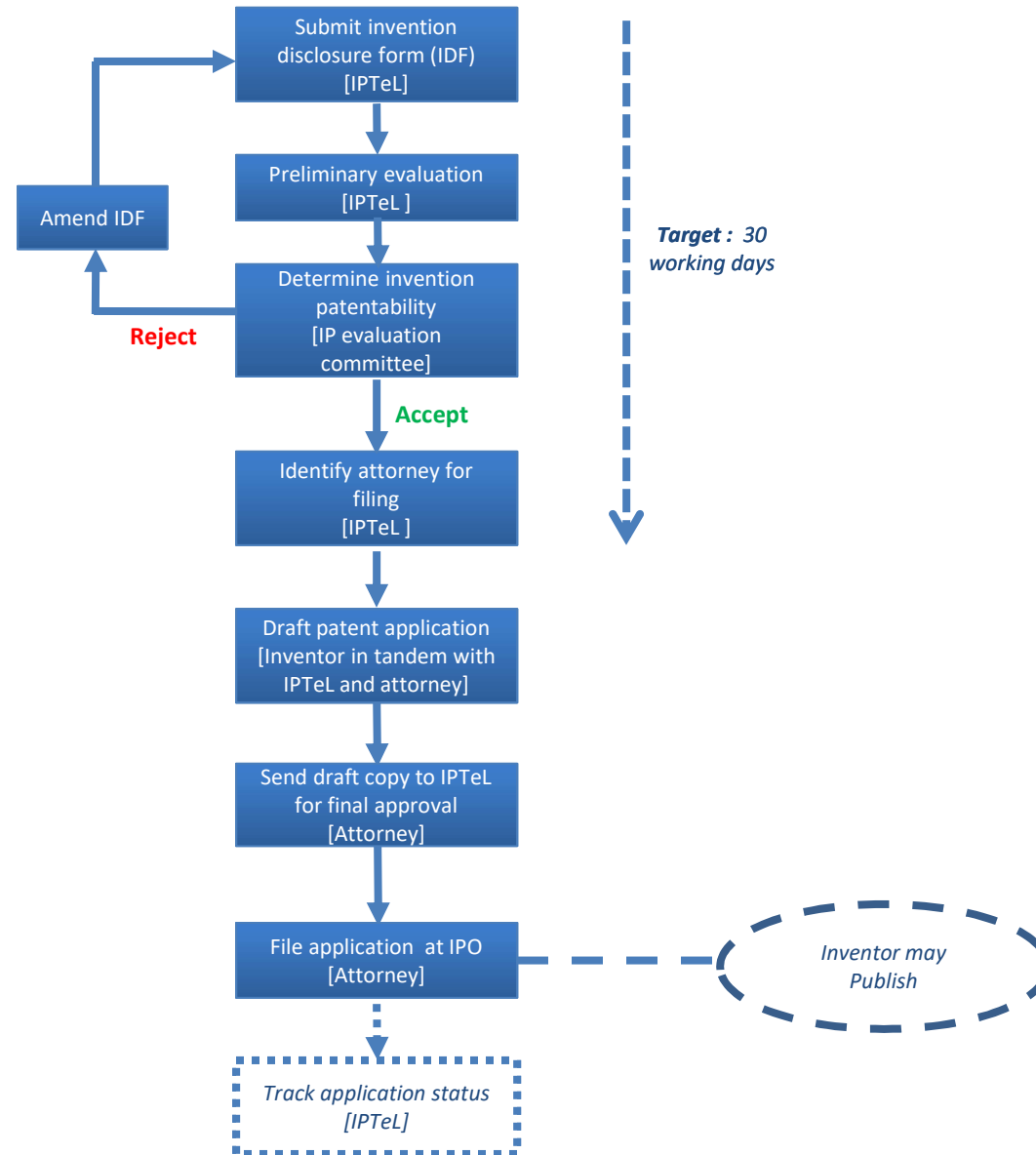
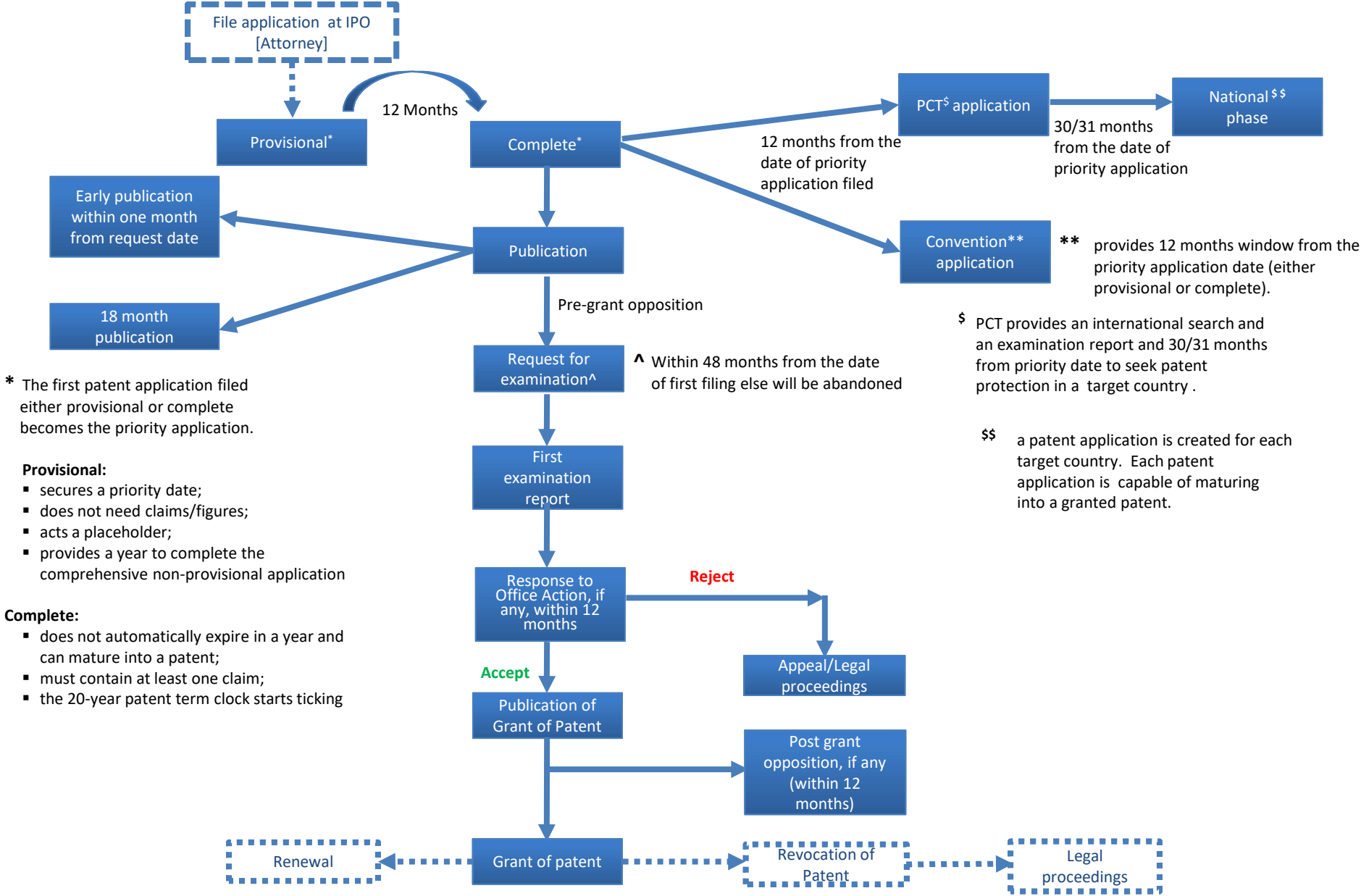


# PATENT PROCESS - IISc



# PATENT PROCESS - PTO



\* The first patent application filed either provisional or complete becomes the priority application.

- Provisional:**
- secures a priority date;
  - does not need claims/figures;
  - acts a placeholder;
  - provides a year to complete the comprehensive non-provisional application

- Complete:**
- does not automatically expire in a year and can mature into a patent;
  - must contain at least one claim;
  - the 20-year patent term clock starts ticking

\$ PCT provides an international search and an examination report and 30/31 months from priority date to seek patent protection in a target country .

\$\$ a patent application is created for each target country. Each patent application is capable of maturing into a granted patent.